

# FLOOR MOUNTED 'B' SERIES JIB CRANE SPECIFICATIONS

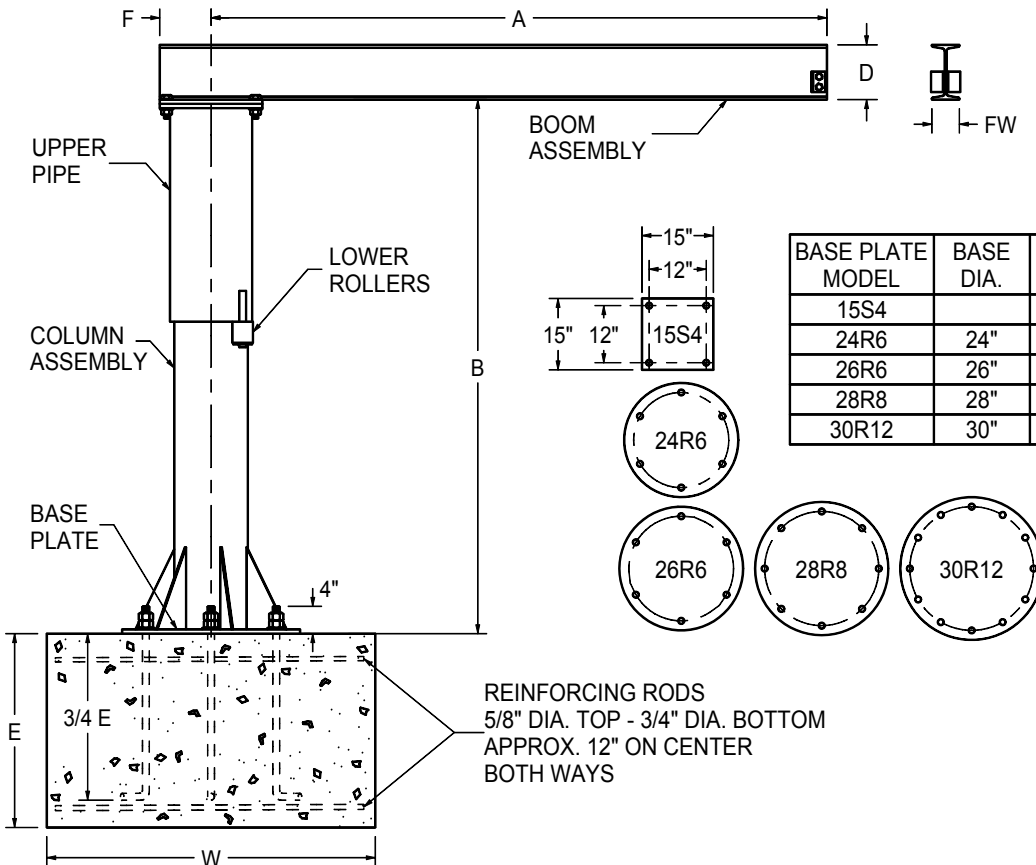
## Jib Crane Accessories:

- Anchor Bolt Kits
- Tagline Kits
- Templates (paper & plywood)
- Hoists & Trolleys (electric & manual)

CAP. (LBS.)	DIMENSIONS						BEAM TYPE	BASE PLATE MODEL	B = 8' HT.		B = 10' HT.		B = 12' HT.	
	A	D	FW	E	W	F			LBS.	MODEL	LBS.	MODEL	LBS.	MODEL
250	6'	5"	3"	3'	4'	4"	S	15S4	309	B2586	338	B25106	368	B25126
250	8'	5"	3"	3'	4'	4"	S	15S4	329	B2588	358	B25108	388	B25128
250	10'	5"	3"	3'	4'	4"	S	15S4	349	B25810	378	B251010	408	B251210
250	12'	5"	3"	3'	4'	4"	S	15S4	369	B25812	398	B251012	428	B251212
250	14'	6"	3 3/8"	3'	5'	4"	S	15S4	425	B25814	454	B251014	484	B251214
250	16'	6"	3 3/8"	3'	5'	5"	S	15S4	499	B25816	537	B251016	575	B251216
500	6'	5"	3"	3'	4'	5"	S	15S4	358	B586	396	B5106	434	B5126
500	8'	5"	3"	3'	4'	5"	S	15S4	378	B588	416	B5108	454	B5128
500	10'	5"	3"	3'	4'	5"	S	15S4	398	B5810	436	B51010	474	B51210
500	12'	6"	3 3/8"	3'	4'	6 1/2"	S	24R6	554	B5812	599	B51012	644	B51212
500	14'	8"	4"	3'	5'	6 1/2"	S	24R6	665	B5814	710	B51014	755	B51214
500	16'	8"	4"	3'	5'	6 1/2"	S	24R6	702	B5816	747	B51016	792	B51216
750	6'	5"	3"	3'	4'	6 1/2"	S	24R6	463	B7586	508	B75106	553	B75126
750	8'	6"	3 3/8"	3'	4'	6 1/2"	S	24R6	504	B7588	549	B75108	594	B75128
750	10'	6"	3 3/8"	3'	4'	6 1/2"	S	24R6	529	B75810	574	B751010	619	B751210
750	12'	6"	3 3/8"	3'	4'	7 1/2"	S	24R6	707	B75812	763	B751012	819	B751212
750	14'	8"	4"	3'	5'	7 1/2"	S	24R6	818	B75814	874	B751014	931	B751214
750	16'	8"	4"	3'	5'	7 1/2"	S	26R6	866	B75816	922	B751016	978	B751216
1000	6'	6"	3 3/8"	3'	4'	6 1/2"	S	26R6	490	B186	535	B1106	580	B1126
1000	8'	6"	3 3/8"	3'	4'	6 1/2"	S	26R6	515	B188	560	B1108	605	B1128
1000	10'	8"	4"	3'	4'	7 1/2"	S	26R6	756	B1810	812	B11010	868	B11210
1000	12'	8"	4"	3'	4'	7 1/2"	S	26R6	793	B1812	849	B11012	905	B11212
1000	14'	8"	4"	3'	5'	7 1/2"	S	26R6	848	B1814	904	B11014	960	B11214
1000	16'	10-3/8"	5-3/4"	3'	5'	8 1/2"	W	26R6	1070	B1816	1137	B11016	1204	B11216
2000	6'	8"	4"	4'	5'	8 1/2"	S	28R8**	745	B286**	832	B2106	899	B2126
2000	8'	8"	4"	4'	5'	8 1/2"	S	28R8	802	B288	869	B2108	935	B2128
2000	10'	8"	4"	4'	5'	8 1/2"	S	28R8	739	B2810	905	B21010	972	B21210
2000	12'	10-3/8"	5-3/4"	4'	6'	9 1/2"	W	30R12	1091	B2812	1165	B21012	1238	B21212

"S" type beams are standard beams with tapered flanges. "W" type beams are wide-flange beams with flat flanges. The trolley used on a "W" type beam must be be designed to operate on a wide-flange beam.

\*\* B286 Uses base plate model 26R6.



BASE PLATE MODEL	BASE DIA.	BOLT CIRCLE	NO. HOLES	HOLE DIA.	BOLT DIA.
15S4			4	7/8"	3/4"
24R6	24"	20"	6	1 1/4"	1"
26R6	26"	22"	6	1 1/4"	1"
28R8	28"	24"	8	1 1/4"	1"
30R12	30"	26"	12	1 1/4"	1"



1377 Kimberly Drive  
 Neenah, WI 54956-1642  
 Phone (920) 722-0101  
 Fax (920) 725-1394  
[www.contrx.com](http://www.contrx.com)