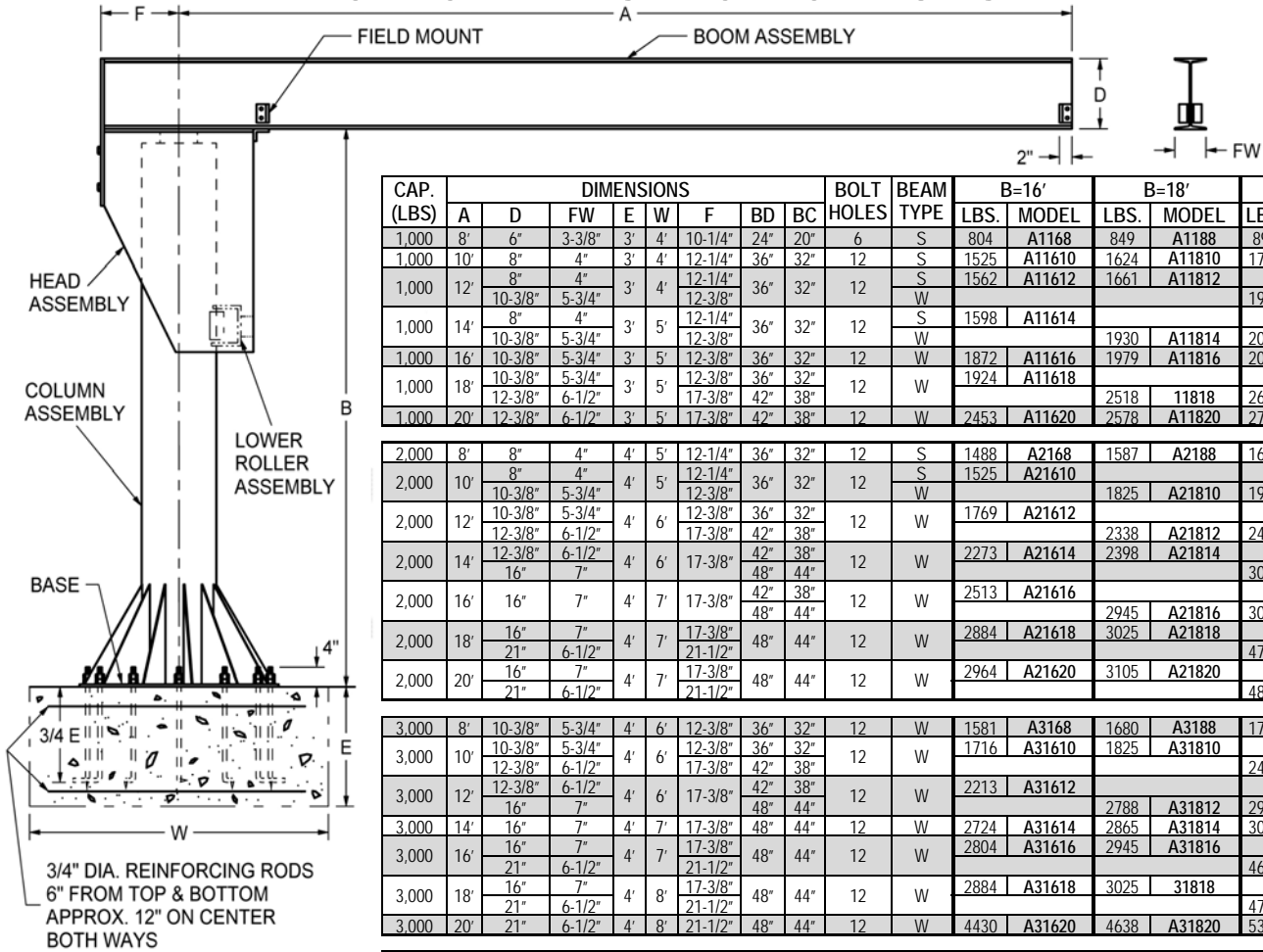
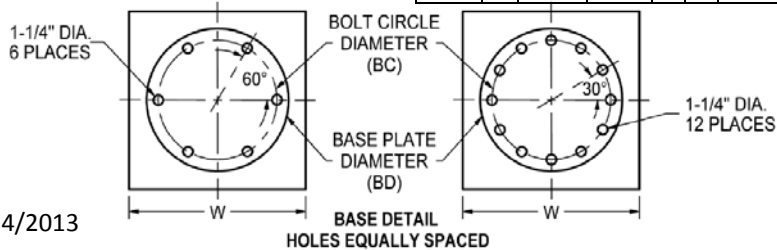


FLOOR MOUNTED 'A' SERIES JIB CRANE SPECIFICATIONS



Note: "S" type beams are standard beams with tapered flanges. "W" type beams are wide-flange beams with flat flanges. The trolley used on a "W" type beam must be designed to operate on a wide-flange beam.

| CAP. (LBS) | DIMENSIONS | | | | | | | | BOLT HOLES | BEAM TYPE | B=16' | | B=18' | | B=20' | |
|---------------|------------|---------|--------|---------|-----|---------|-----|-----|---------------|--------------|-------|---------|-------|---------|-------|---------|
| | A | D | FW | E | W | F | BD | BC | | | LBS. | MODEL | LBS. | MODEL | LBS. | MODEL |
| 1,000 | 8' | 6" | 3-3/8" | 3' | 4' | 10-1/4" | 24" | 20" | 6 | S | 804 | A1168 | 849 | A1188 | 894 | A1208 |
| 1,000 | 10' | 8" | 4" | 3' | 4' | 12-1/4" | 36" | 32" | 12 | S | 1525 | A11610 | 1624 | A11810 | 1723 | A12010 |
| 1,000 | 12' | 8" | 4" | 3' | 4' | 12-1/4" | 36" | 32" | 12 | S | 1562 | A11612 | 1661 | A11812 | 1987 | A12012 |
| | | 10-3/8" | 5-3/4" | 12-3/8" | | | | | | | | | | | | |
| 1,000 | 14' | 8" | 4" | 3' | 5' | 12-1/4" | 36" | 32" | 12 | S | 1598 | A11614 | 1930 | A11814 | 2039 | A12014 |
| | | 10-3/8" | 5-3/4" | 12-3/8" | | | | | | | | | | | | |
| 1,000 | 16' | 10-3/8" | 5-3/4" | 3' | 5' | 12-3/8" | 36" | 32" | 12 | W | 1872 | A11616 | 1979 | A11816 | 2091 | A12016 |
| | | 12-3/8" | 6-1/2" | 17-3/8" | 42" | 38" | | | | | | | | | | |
| 1,000 | 18' | 10-3/8" | 5-3/4" | 3' | 5' | 12-3/8" | 36" | 32" | 12 | W | 1924 | A11618 | 2518 | 11818 | 2643 | A12018 |
| | | 12-3/8" | 6-1/2" | 17-3/8" | 42" | 38" | | | | | | | | | | |
| 1,000 | 20' | 12-3/8" | 6-1/2" | 3' | 5' | 17-3/8" | 42" | 38" | 12 | W | 2453 | A11620 | 2578 | A11820 | 2703 | A12020 |
| 2,000 | 8' | 8" | 4" | 4' | 5' | 12-1/4" | 36" | 32" | 12 | S | 1488 | A2168 | 1587 | A2188 | 1686 | A2208 |
| 2,000 | 10' | 8" | 4" | 4' | 5' | 12-1/4" | 36" | 32" | 12 | S | 1525 | A21610 | 1825 | A21810 | 1934 | A22010 |
| | | 10-3/8" | 5-3/4" | 12-3/8" | | | | | | | | | | | | |
| 2,000 | 12' | 10-3/8" | 5-3/4" | 4' | 6' | 12-3/8" | 36" | 32" | 12 | W | 1769 | A21612 | 2338 | A21812 | 2463 | A22012 |
| | | 12-3/8" | 6-1/2" | 17-3/8" | 42" | 38" | | | | | | | | | | |
| 2,000 | 14' | 12-3/8" | 6-1/2" | 4' | 6' | 17-3/8" | 42" | 38" | 12 | W | 2273 | A21614 | 2398 | A21814 | 3006 | A22014 |
| | | 16" | 7" | 17-3/8" | 48" | 44" | | | | | | | | | | |
| 2,000 | 16' | 16" | 7" | 4' | 7' | 17-3/8" | 42" | 38" | 12 | W | 2513 | A21616 | 2945 | A21816 | 3086 | A22016 |
| | | 21" | 6-1/2" | 21-1/2" | 48" | 44" | | | | | | | | | | |
| 2,000 | 18' | 16" | 7" | 4' | 7' | 17-3/8" | 48" | 44" | 12 | W | 2884 | A21618 | 3025 | A21818 | 4732 | A22018 |
| | | 21" | 6-1/2" | 21-1/2" | 48" | 44" | | | | | | | | | | |
| 2,000 | 20' | 16" | 7" | 4' | 7' | 17-3/8" | 48" | 44" | 12 | W | 2964 | A21620 | 3105 | A21820 | 4846 | A22020 |
| 3,000 | 8' | 10-3/8" | 5-3/4" | 4' | 6' | 12-3/8" | 36" | 32" | 12 | W | 1581 | A3168 | 1680 | A3188 | 1779 | A3208 |
| 3,000 | 10' | 10-3/8" | 5-3/4" | 4' | 6' | 12-3/8" | 36" | 32" | 12 | W | 1716 | A31610 | 1825 | A31810 | 2403 | A32010 |
| | | 12-3/8" | 6-1/2" | 17-3/8" | 42" | 38" | | | | | | | | | | |
| 3,000 | 12' | 12-3/8" | 6-1/2" | 4' | 6' | 17-3/8" | 42" | 38" | 12 | W | 2213 | A31612 | 2788 | A31812 | 2929 | A32012 |
| | | 16" | 7" | 17-3/8" | 48" | 44" | | | | | | | | | | |
| 3,000 | 14' | 16" | 7" | 4' | 7' | 17-3/8" | 48" | 44" | 12 | W | 2724 | A31614 | 2865 | A31814 | 3006 | A32014 |
| | | 21" | 6-1/2" | 21-1/2" | 48" | 44" | | | | | | | | | | |
| 3,000 | 16' | 16" | 7" | 4' | 7' | 17-3/8" | 48" | 44" | 12 | W | 2804 | A31616 | 2945 | A31816 | 4618 | A32016 |
| | | 21" | 6-1/2" | 21-1/2" | 48" | 44" | | | | | | | | | | |
| 3,000 | 18' | 16" | 7" | 4' | 8' | 17-3/8" | 48" | 44" | 12 | W | 2884 | A31618 | 3025 | 31818 | 4732 | A32018 |
| | | 21" | 6-1/2" | 21-1/2" | 48" | 44" | | | | | | | | | | |
| 3,000 | 20' | 21" | 6-1/2" | 4' | 8' | 21-1/2" | 48" | 44" | 12 | W | 4430 | A31620 | 4638 | A31820 | 5305 | A32020 |
| 4,000 | 8' | 10-3/8" | 5-3/4" | 4' | 6' | 12-3/8" | 36" | 32" | 12 | W | 1664 | A4168 | 1773 | A4188 | 1882 | A4208 |
| 4,000 | 10' | 12-3/8" | 6-1/2" | 4' | 6' | 12-3/8" | 36" | 32" | 12 | W | 1763 | A41610 | 2278 | A41810 | 2403 | A42010 |
| | | 17-3/8" | 42" | 38" | | | | | | | | | | | | |
| 4,000 | 12' | 16" | 7" | 4' | 7' | 17-3/8" | 42" | 38" | 12 | W | 2354 | A41612 | 3255 | A41812 | 3396 | A42012 |
| | | 21-3/8" | 48" | 44" | | | | | | | | | | | | |
| 4,000 | 14' | 16" | 7" | 4' | 7' | 21-3/8" | 48" | 44" | 12 | W | 3194 | A41614 | 3335 | A41814 | 3476 | A42014 |
| | | 21-3/8" | 48" | 44" | | | | | | | | | | | | |
| 4,000 | 16' | 23-3/4" | 7" | 4' | 8' | 21-1/2" | 48" | 44" | 12 | W | 3614 | A41616 | 4505 | A41816 | 4778 | A42016 |
| | | 21-1/2" | 48" | 44" | | | | | | | | | | | | |
| 4,000 | 18' | 23-3/4" | 7" | 4' | 8' | 21-3/8" | 48" | 44" | 12 | W | 3738 | A41618 | 4629 | A41818 | 4902 | A42018 |
| | | 21-1/2" | 48" | 44" | | | | | | | | | | | | |
| 4,000 | 20' | 23-3/4" | 7" | 4' | 8' | 21-1/2" | 48" | 44" | 12 | W | 4545 | A41620 | 5643 | A41820 | 5894 | A42020 |
| 6,000 | 8' | 16" | 7" | 4' | 7' | 17-3/8" | 42" | 38" | 12 | W | 2212 | A6168 | 2337 | A6188 | 2462 | A6208 |
| 6,000 | 10' | 16" | 7" | 4' | 7' | 17-3/8" | 42" | 38" | 12 | W | 2292 | A61610 | 2417 | A61810 | 2542 | A62010 |
| | | 21" | 6-1/2" | 21-1/2" | 48" | 44" | | | | | | | | | | |
| 6,000 | 12' | 16" | 7" | 4' | 7' | 21-3/8" | 48" | 44" | 12 | W | 3139 | A61612 | 3281 | A61812 | 4747 | A62012 |
| | | 21" | 6-1/2" | 21-1/2" | 48" | 44" | | | | | | | | | | |
| 6,000 | 14' | 21" | 6-1/2" | 4' | 8' | 21-3/8" | 48" | 44" | 12 | W | 3498 | A61614 | 4653 | A61814 | 4861 | A62014 |
| | | 21-1/2" | 48" | 44" | | | | | | | | | | | | |
| 6,000 | 16' | 23-3/4" | 7" | 4' | 8' | 21-1/2" | 48" | 44" | 12 | W | 4384 | A61616 | 5680 | A61816 | 5931 | A62016 |
| | | 23-7/8" | 9" | 24-1/2" | 54" | 50" | | | | | | | | | | |
| 6,000 | 18' | 23-7/8" | 9" | 4' | 9' | 24-1/2" | 54" | 50" | 12 | W | 5581 | A61618 | 5832 | A61818 | 6083 | A62018 |
| | | 23-7/8" | 9" | 24-1/2" | 54" | 50" | | | | | | | | | | |
| 6,000 | 20' | 23-7/8" | 9" | 4' | 9' | 24-1/2" | 54" | 50" | 12 | W | 5733 | A61620 | 5984 | A61820 | 6235 | A62020 |
| 10,000 | 8' | 21-1/8" | 8-1/4" | 4' | 9' | 21-3/8" | 60" | 56" | 12 | W | 4746 | A10168 | 4997 | A10188 | 5248 | A10208 |
| 10,000 | 10' | 21-1/8" | 8-1/4" | 4' | 9' | 21-1/2" | 60" | 56" | 12 | W | 4882 | A101610 | 5133 | A101810 | 5384 | A102010 |
| | | 24-1/2" | 66" | 60" | | | | | | | | | | | | |
| 10,000 | 12' | 21-1/8" | 8-1/4" | 4' | 9' | 24-1/2" | 66" | 60" | 12 | W | 5892 | A101612 | 6207 | A101812 | 6522 | A102012 |
| | | 24-1/2" | 66" | 60" | | | | | | | | | | | | |
| 10,000 | 14' | 23-7/8" | 9" | 4' | 9' | 24-1/2" | 66" | 60" | 12 | W | 6248 | A101614 | 6563 | A101814 | 6878 | A102014 |
| | | 23-7/8" | 9" | 24-1/2" | 66" | 60" | | | | | | | | | | |
| 10,000 | 16' | 23-7/8" | 9" | 4' | 10' | 24-1/2" | 66" | 60" | 12 | W | 6400 | A101616 | 6715 | A101816 | 7030 | A102016 |
| | | 23-7/8" | 9" | 29-1/2" | 72" | 66" | | | | | | | | | | |
| 10,000 | 18' | 23-7/8" | 9" | 4' | 10' | 29-1/2" | 72" | 66" | 12 | W | 7031 | A101618 | 7346 | A101818 | 7661 | A102018 |
| | | 23-7/8" | 9" | 29-1/2" | 72" | 66" | | | | | | | | | | |
| 10,000 | 20' | 24-1/2" | 9" | 4' | 10' | 29-1/2" | 72" | 66" | 12 | W | 7788 | A101620 | 8103 | A101820 | 8418 | A102020 |



1377 Kimberly Drive
Neenah, WI 54956-1642
Phone (920) 722-0101
Fax (920) 725-1394
www.contrx.com